



THPOLSKA

TECNOPI – HTC Polska Sp. z o.o.

Międzyrzecze Górne 457

43-392 Międzyrzecze Górne - PL

+48 459 412 263 info@thpolska.pl

RAILWAYS APPLICATION

Follow the new progress with



TRANSPORTATION



OUR PROCESSES

- PROJECT ENGINEERING
IN COOPERATION WITH CUSTOMERS
- MANUFACTURING AND SUPPLYING
OF MECHANICAL, ELECTRICAL
AND ELECTRONIC COMPONENTS
- FINAL ELECTRICAL TESTING OF ALL
PRODUCTS
FINAL TEST AFTER PRODUCTION
PROCESS
- AND ISSUING OF CERTIFICATES
- INSTALLATION AND SET-UP

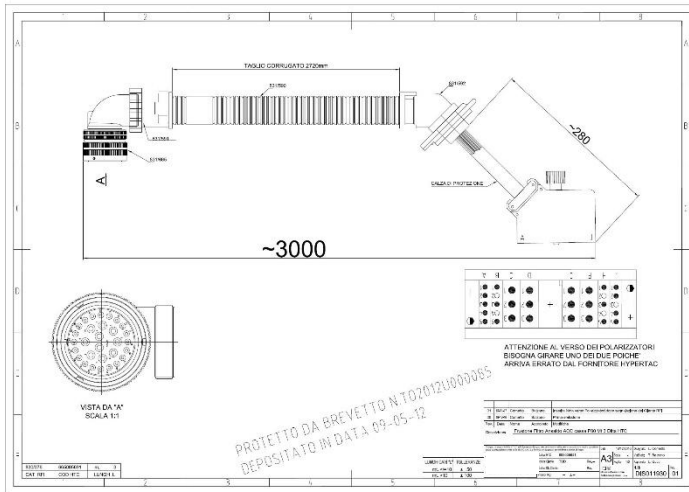
**OUR CUSTOMERS ARE THE MAIN COMPANIES IN THE RAILWAY FIELD, e.g. ALSTOM, RFI, BOMBARDIER,
HITACHI RAIL...**



Cablaggi per Segnalamento

TECNOPI – HTC Polska Sp. z o.o.

PRODUCTION ENGINEERING



PRODUCTION AND TESTING

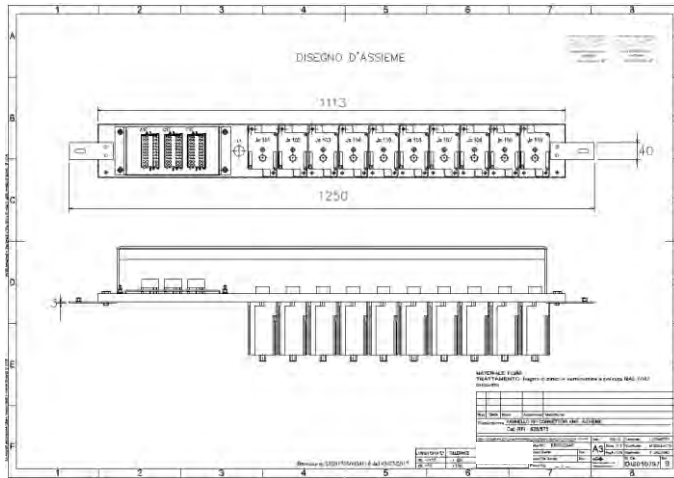


APPLICATION





PRODUCTION ENGINEERING

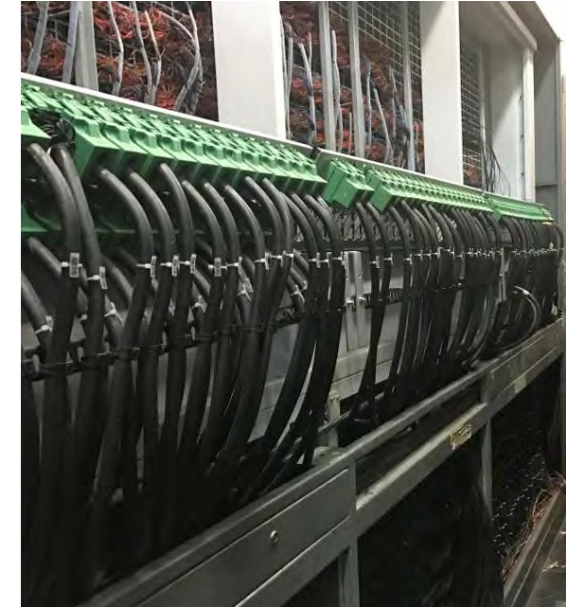


RCE/ACC/ACEI TELAJ INTERRUTTORI

PRODUCTION AND TESTING



APPLICATION

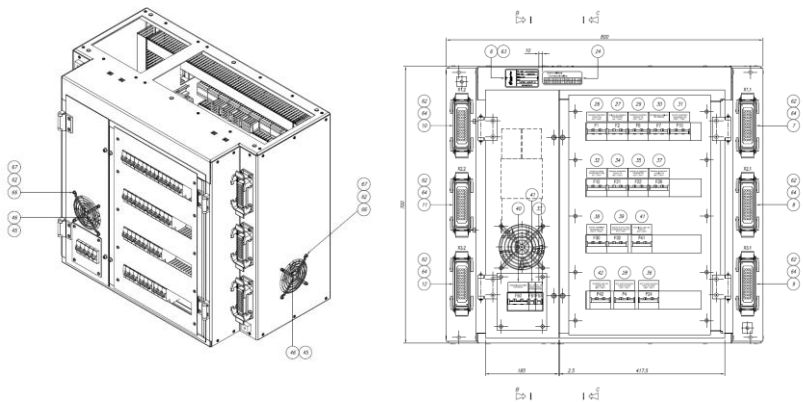




SWITCHBOARDS SBB

TECNOPI – HTC Polska Sp. z o.o.

PRODUCTION ENGINEERING



PRODUCTION AND TESTING



APPLICATION

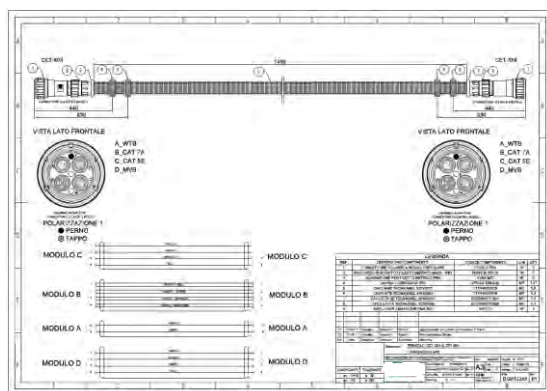
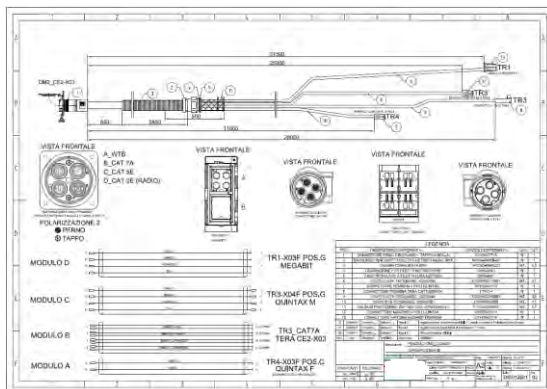




TECNOPI – HTC Polska Sp. z o.o.

JUMPER CARAVAGGIO - MASACCIO

PRODUCTION ENGINEERING



PRODUCTION AND TESTING



APPLICATION





THPOLSKA

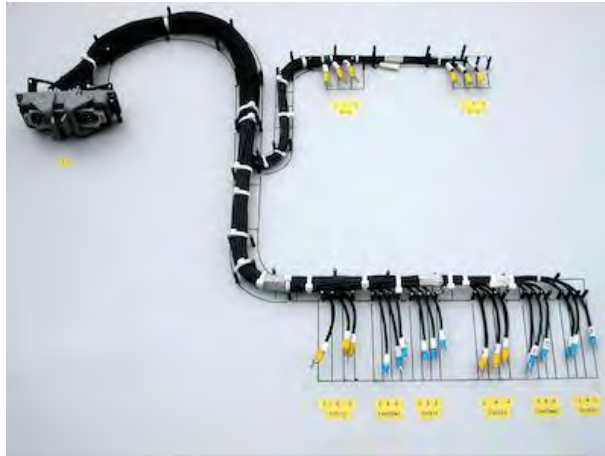
TECNOPI – HTC Polska Sp. z o.o.

TRAIN WIRE HARNESS

**PRODUCTION
ENGINEERING**

**PRODUCTION
AND TESTING**

APPLICATION

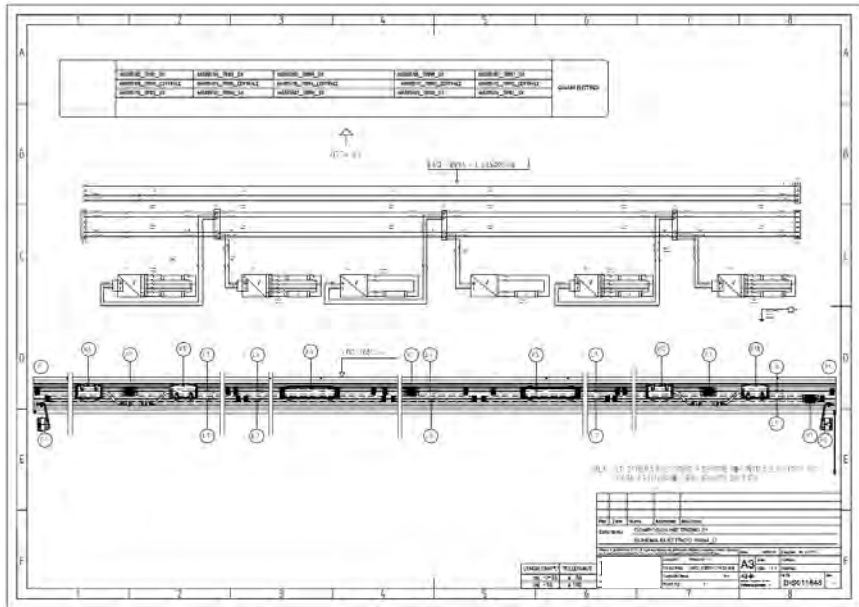




TECNOPI – HTC Polska Sp. z o.o.

TRAIN WIRE HARNESS

PRODUCTION ENGINEERING



PRODUCTION AND TESTING



APPLICATION



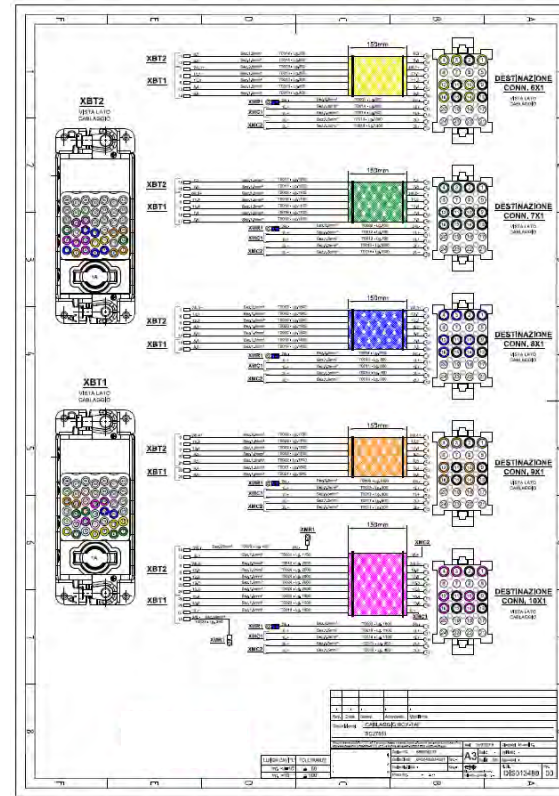


TECNOPI – HTC Polska Sp. z o.o.

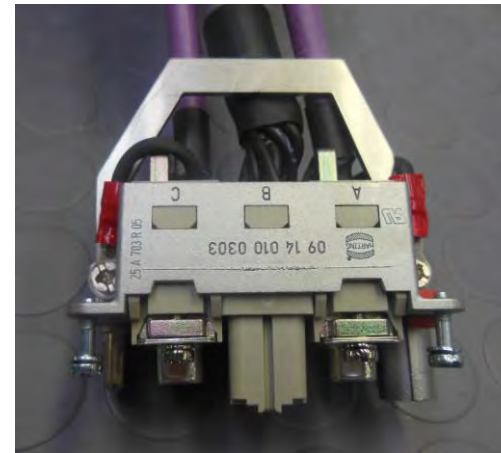
PRODUCTION ENGINEERING

SCHEMA CABI ALIQUO BOX TAF											
POSIZIONE	SE	COMPARTIMENTO	LINEA ALIQUO	CONDIZIONE	CONDIZIONE	CONDIZIONE	CONDIZIONE	CONDIZIONE	CONDIZIONE	CONDIZIONE	CONDIZIONE
1.1	11										
1.2	12										
1.3	13										
1.4	14										
1.5	15										
1.6	16										
1.7	17										
1.8	18										
1.9	19										
1.10	20										
1.11	21										
1.12	22										
1.13	23										
1.14	24										
1.15	25										
1.16	26										
1.17	27										
1.18	28										
1.19	29										
1.20	30										
1.21	31										
1.22	32										
1.23	33										
1.24	34										
1.25	35										
1.26	36										
1.27	37										
1.28	38										
1.29	39										
1.30	40										
1.31	41										
1.32	42										
1.33	43										
1.34	44										
1.35	45										
1.36	46										
1.37	47										
1.38	48										
1.39	49										
1.40	50										

TRAIN WIRE HARNESS



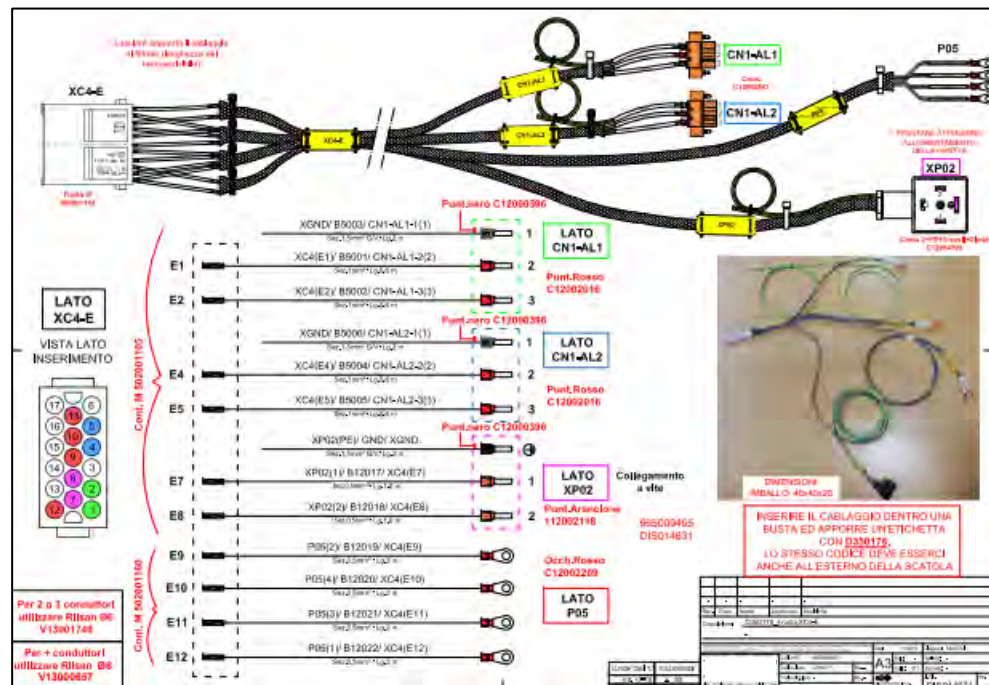
PRODUCTION AND TESTING





TECNOPI – HTC Polska Sp. z o.o.

PRODUCTION ENGINEERING



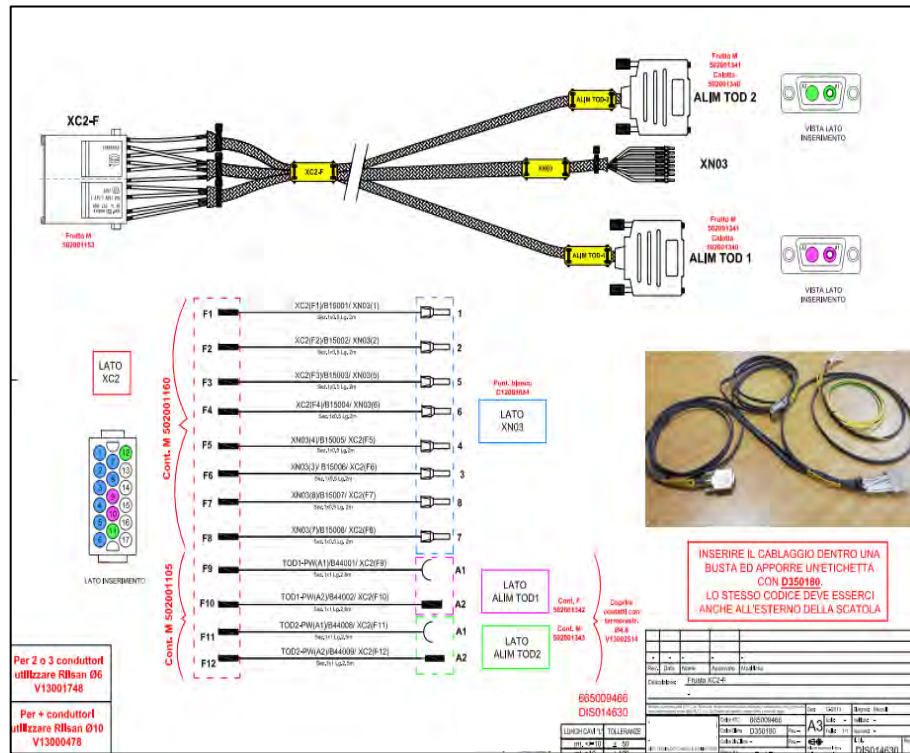
PRODUCTION AND TESTING





TECNOPI – HTC Polska Sp. z o.o.

PRODUCTION ENGINEERING



PRODUCTION AND TESTING





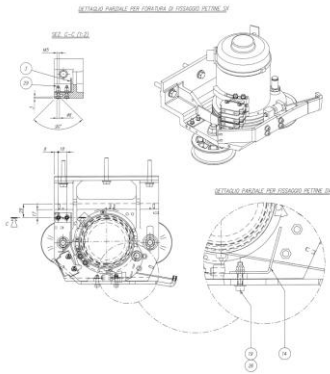
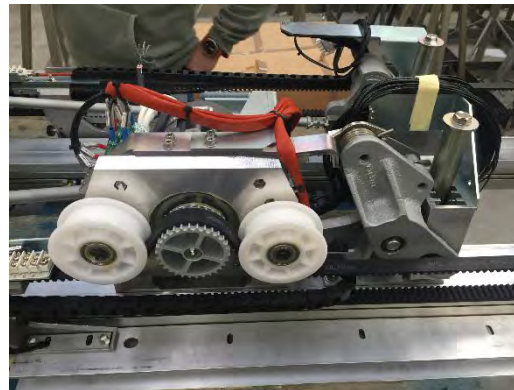
TECNOPI – HTC Polska Sp. z o.o.

TRAIN DOOR SYSTEM

PRODUCTION ENGINEERING

PRODUCTION AND TESTING

APPLICATION





TECNOPI – HTC Polska Sp. z o.o.

PRODUCTION ENGINEERING

AGTU X61

PRODUCTION AND TESTING



APPLICATION





TECNOPI – HTC Polska Sp. z o.o.

PANTOGRAPH

PRODUCTION ENGINEERING

PRODUCTION AND TESTING



APPLICATION

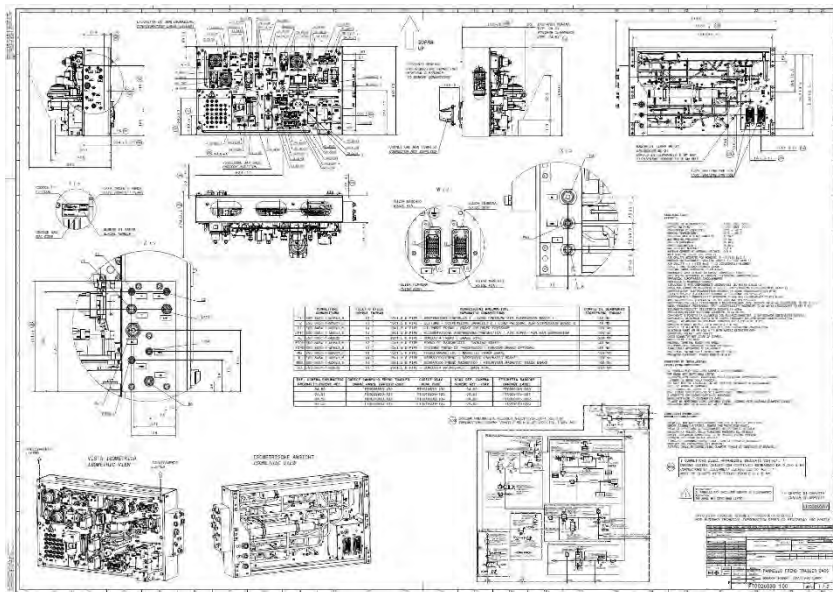




ICX SIEMENS BRAKE PANEL

TECNOPI – HTC Polska Sp. z o.o.

PRODUCTION ENGINEERING



PRODUCTION AND TESTING




APPLICATION





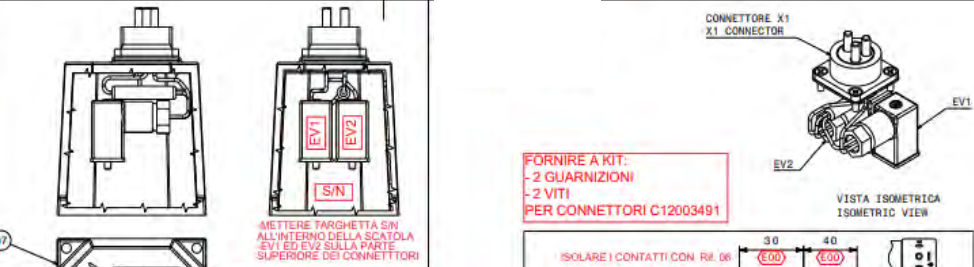
TECNOPI – HTC Polska Sp. z o.o.

PRODUCTION ENGINEERING



COPPIA DI CHIUSURA: 0.8 Nm
TIGHTENING TORQUE: 0.8 Nm

CONTRADESSARE LE VITI CON UN PUNTO DI VERDICE
MARK SCREWS WITH PAINT MARKS VERDICE (GREEN)
APPLICARE LOCTITE SUI FILETTI SECONDO IST-262
APPLY LOCTITE ON THREADS ACCORDING TO IST-262
(SVI, SCS, SLL)



CONNETTORE X1
X1 CONNECTOR

VISTA ISOMETRICA
ISOMETRIC VIEW

FORNIRE A KIT:
- 2 GUARNIZIONI
- 2 VITI
PER CONNETTORI C12003491

METTERE TARGHETTA S/N
ALL'INTERNO DELLA SCATOLA
EV1 ED EV2 SULLA PARTE
SUPERIORE DEI CONNETTORI

MONTARE IL CONNETTORE
ORIENTATO COME A DISEGNO
MOUNT THE CONNECTOR AS SHOWN

ISOLARE I CONTATTI CON RIF. 06
ISOLATE CONTACTS WITH REF. 06

ISOLARE CON RIF. 12
ISOLATE WITH REF. 12

UTILIZZARE PINZA PI
LOC 3
POS. 1.50
CONNETTORE X1
X1 CONNECTOR

UTILIZZARE PINZA PI
LOC 3
POS. 1.50
CONNETTORE X1
X1 CONNECTOR

COPPIA DI CHIUSURA:
1.3 Nm
TIGHTENING TORQUE:
1.3 Nm

665007915
DIS013219

DETTAGLIO A
SCALA: 2:1
DETAIL A
SCALE: 2:1

CABLAGGIO ELETTRICO
ELECTRIC WIRING

FT0020282-000

REV.	RIF. REF.	CODICE CODE	Q.TA Q.TY	DESCRIZIONE DESCRIPTION	NOTE NOTES
	14	FT0120732-000	4	TUBETTO TERMINALE TUBULAR TERMINAL	C12003774
	13	2042.37.009		LOCTITE 242 LOCTITE 242	V13000230
	12	FT0029311-000	30mm	GUAINA TERMORESTRINGENTE 16/4 HEATSHRINK SLEEVE	513000175
	11	4/202000/0	1	DADO M3 NUT M3	M13000848
	10	FT0020335-000	1	RONDELLA ELASTICA ZIGRINATA Ø3.1 CONICAL KNURLED WASHER Ø3.1	M13000847
	09	FT0040155-001	1	VITE T.E. M3x6 HC SCREW M3x6	M13000850
	08	2/505233	3	TERMINALE ROSSO Ø3 TERMINAL WIRE RED Ø3	512002726
	07	*	1	COPERCHIO LAVORATO MACHINED COVER	503001391
	06	FT0027873-000	140mm	GUAINA TERMORESTRINGENTE CGPT-9.5/4.B HEATSHRINK SLEEVE	513000295
	05	2/505262	1	FASCETTA TY-RAP TY-RAP CABLE TIE	I13002245
	04	FT0022264-001	0.5 m	CAVO UNIPOLARE 1x1 mm ² WIRE 1x1 mm ²	C11000078
	03	2/515835	2	CONNETTORE PER ELETTROVALVOLA MAGNET VALVES CONNECTOR	C12003491
	02	4/103038/0	4	VITE T.S.P.I.C. M3x10 SCREW M3x10	M13002743
	01	*	1	CONNETTORE X1 X1 CONNECTOR	502001363

PRODUCTION AND TESTING





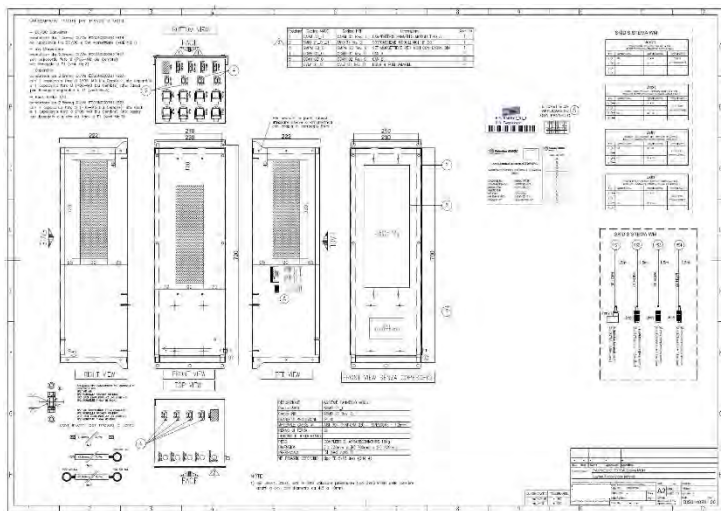
QUADRI AMGC WABTEC FOR CARAVAGGIO

TECNOPI – HTC Polska Sp. z o.o.

PRODUCTION ENGINEERING

PRODUCTION AND TESTING

APPLICATION





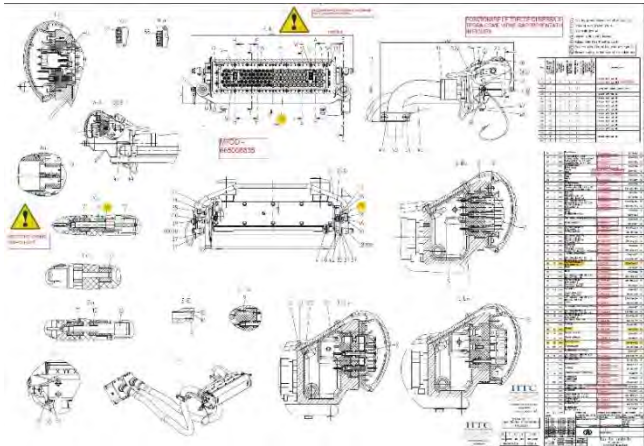
TECNOPI – HTC Polska Sp. z o.o.

GANCI ACCOPPIATORI ECOUPPLERS

PRODUCTION ENGINEERING

PRODUCTION AND TESTING

APPLICATION





TECNOPI – HTC Polska Sp. z o.o.

GROUNDING CABLE

PRODUCTION AND TESTING





TECNOPI – HTC Polska Sp. z o.o.

PRODUCTION AND TESTING





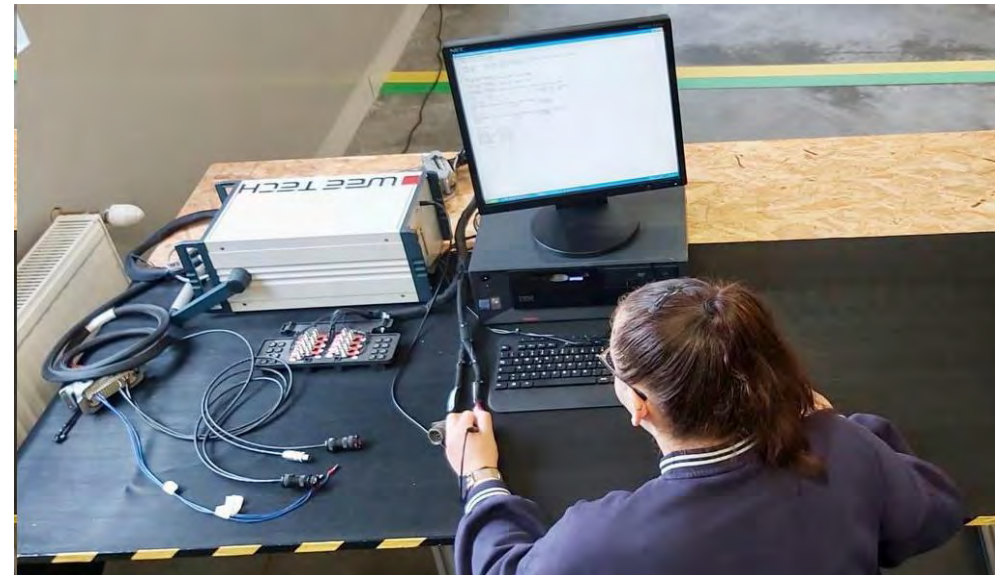
TECNOPI – HTC Polska Sp. z o.o.

OUR TESTING EQUIPMENT

Data transmission test



FLUKE DSX 5000



WEETECH W 427



TECNOPI – HTC Polska Sp. z o.o.

**Thank you for
your attention !**

Carry on the new progress with us ..
